

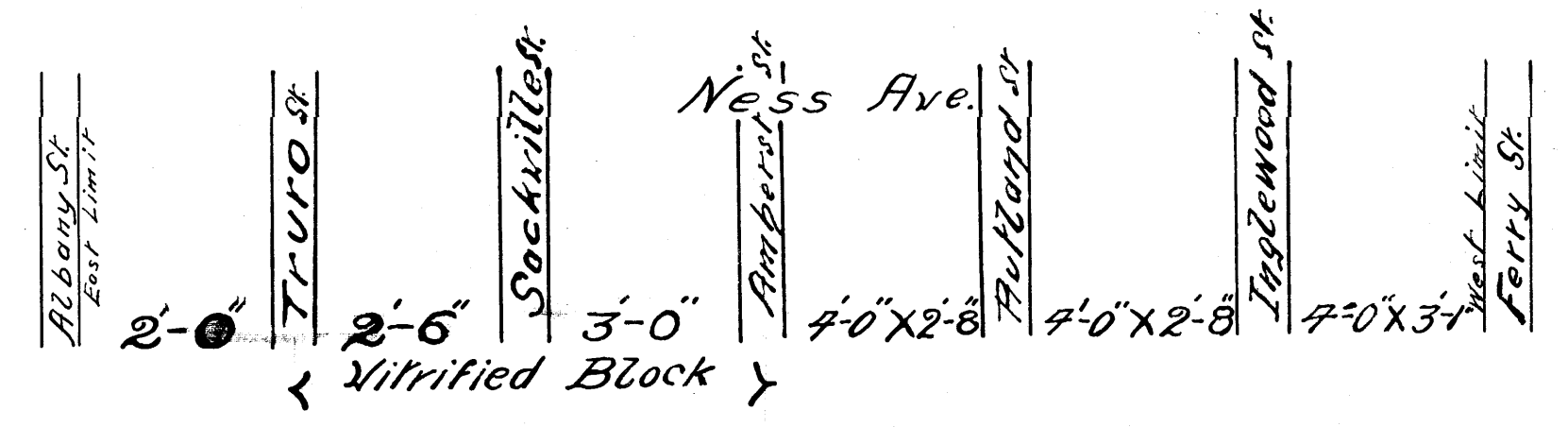
Appendix G

Reference Drawings

- 1. Ness Combined Sewer - Ferry Road to Albany Street (1914) (4 pages)**
- 2. St James Rods Clubhouse Sewer and Water services**
- 3. Assiniboine Pathway Sewer_2S-249(Drawing 351) (1960)**
- 4. District_2_Sanitary Sewer_Sheet_9**
- 5. District_2_Sanitary Sewer_Sheet_10**

Porlyge Ave.

Albany St.



NESS AVE. SEWER

From
Ferry St. to Albany St.

← Circular X Egg-shaped →



Scale Horiz 200' = 1"
Vert 4' = 1"

Assiniboia Engineers Office
May 1914
G. W. Lloyd, M. E.

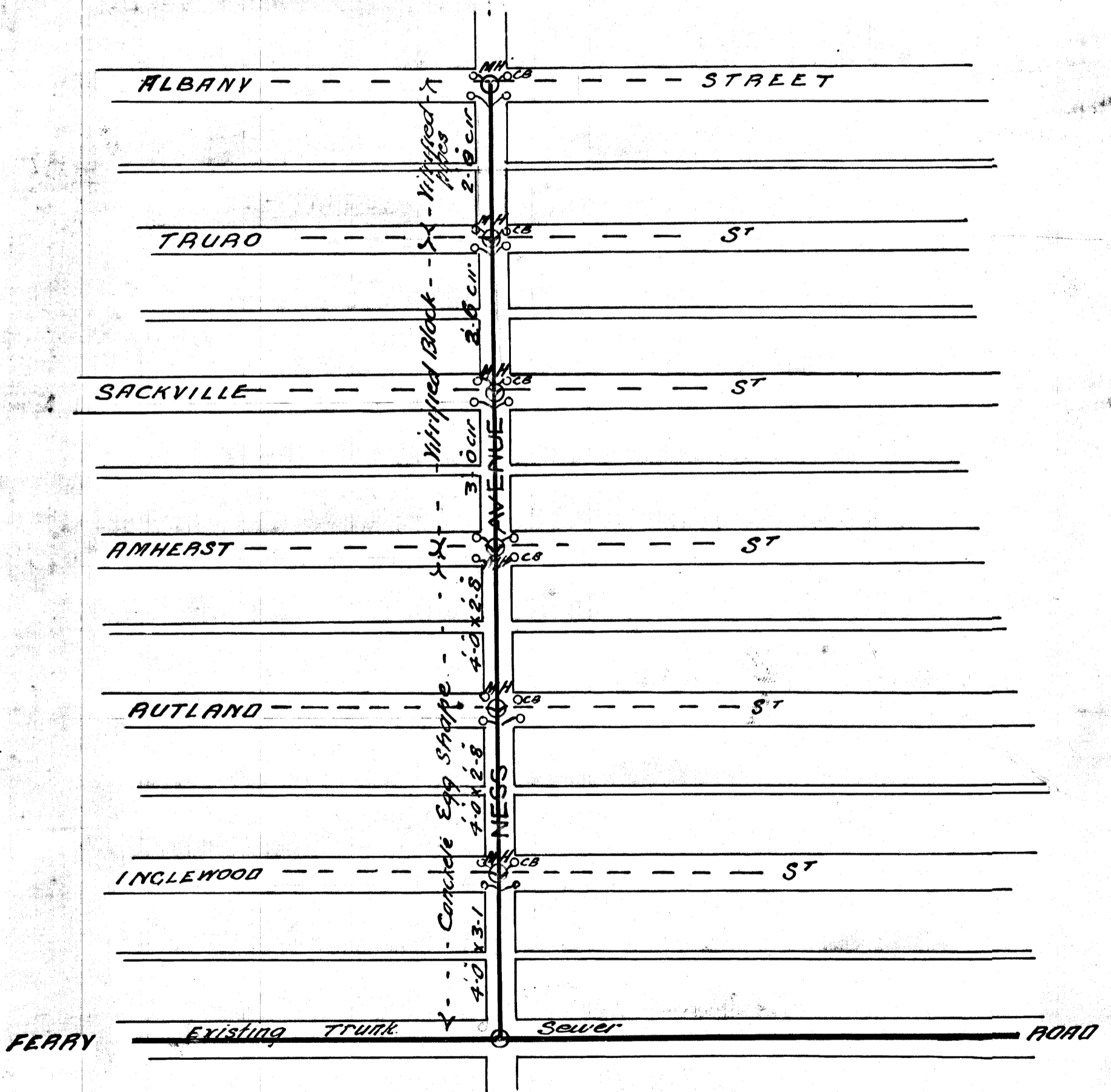
MC-3562

PROJ. 1886 - VITRIFIED
SEWER

City of Assiniboia
Ness Ave; Sewer from Ferry to Albany

Scale 200' = 1"

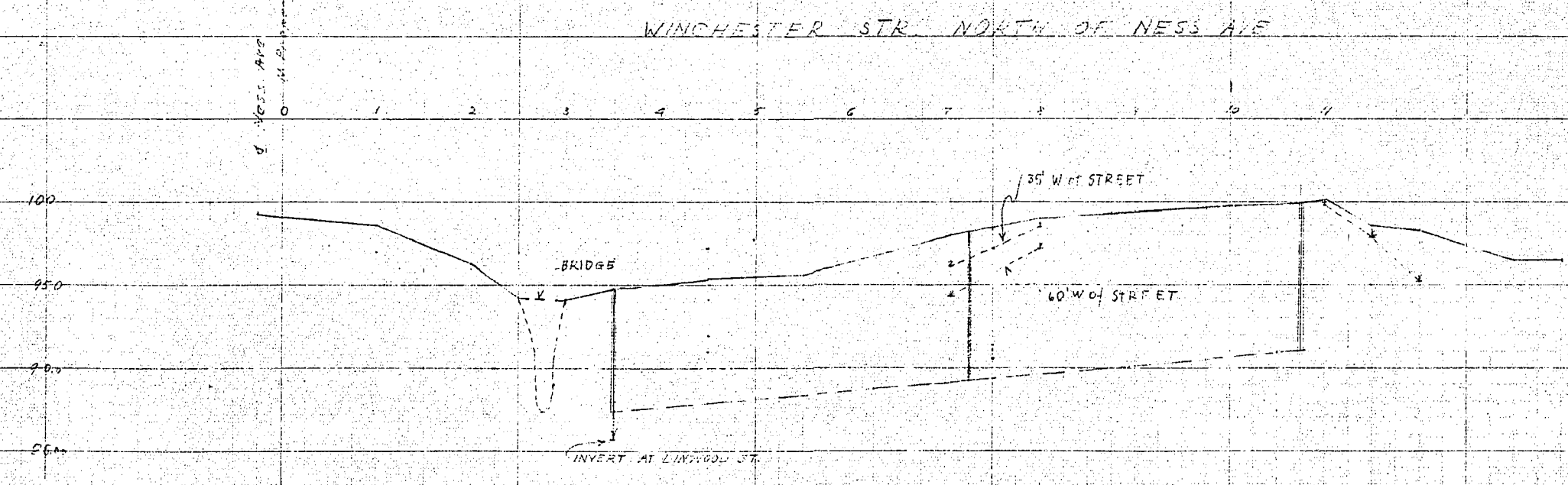
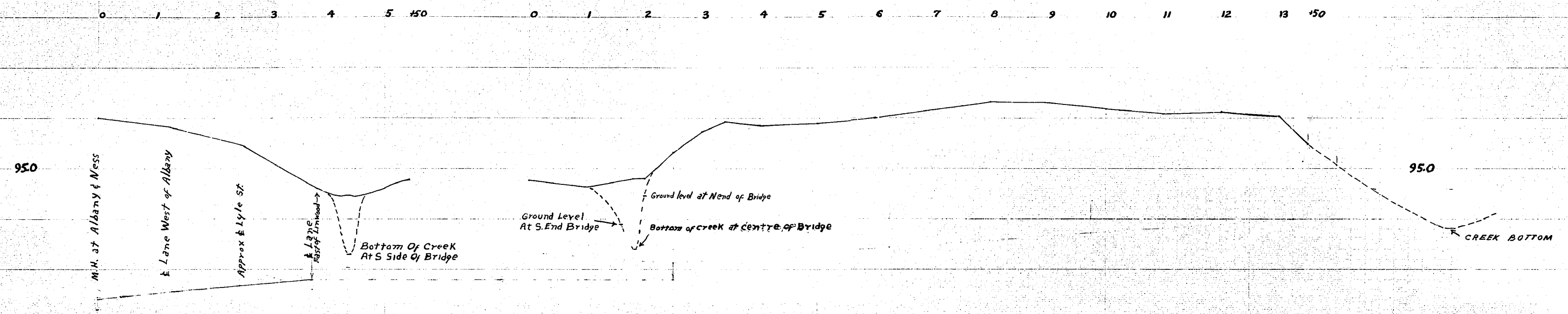
WC-3217



C. W. Reynolds
May 1917

T.C.

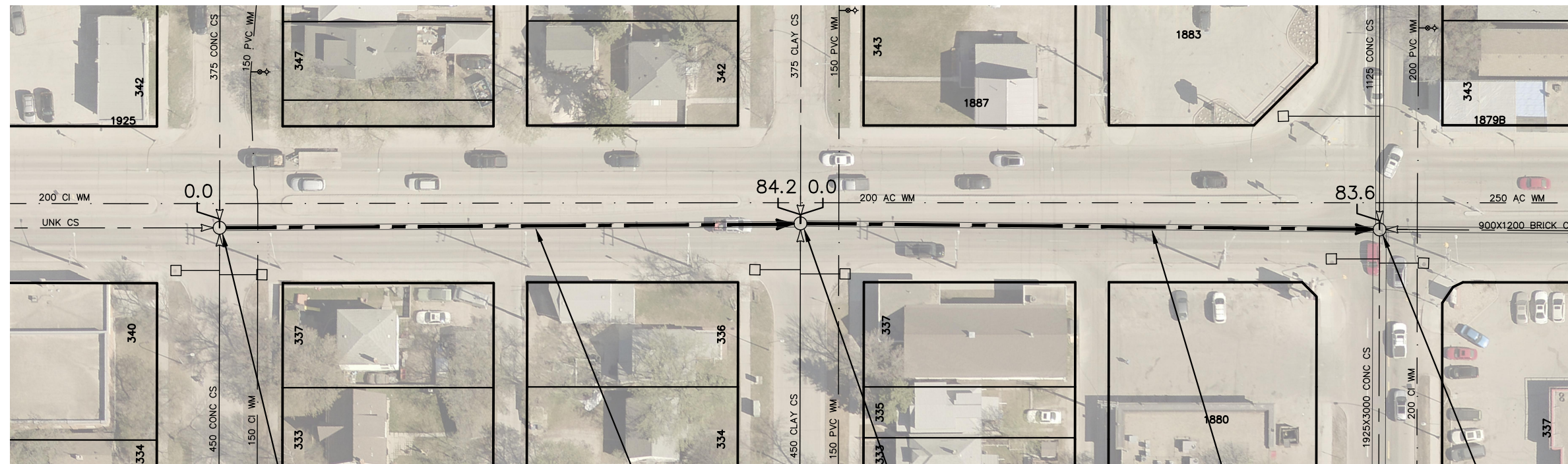
PROFILE of \pm NESS AVE. ALBANY-LINWOOD ALSO \pm PROFILE LINWOOD NORTH \pm NESS



205.1

305.1

NESS AVENUE



SEWER JUNCTION INFORMATION FROM SEWER VIDEO INSPECTION		
SEWER ID S-MA20007984		
DISTANCE FROM MH ID S-MH20007320		
DISTANCE	DIAMETER	CLOCK
6.9	300	3
45.1	100	1
77.1	250	11
80.5	250	1

SEWER JUNCTION INFORMATION FROM SEWER VIDEO INSPECTION		
SEWER ID S-MA20007983		
DISTANCE FROM MH ID S-MH20007319		
DISTANCE	DIAMETER	CLOCK
7.8	200	2
8.2	200	10
35.0	200	1
44.8	200	1
61.7	200	11
62.6	200	1

RUTLAND ST

S-MH20007320
RIM 234.97
INV N 227.98
INV E 228.11
INV S 227.98
INV W 228.11

84.20 OF 800X1200 BRICK CS
LINED WITH 36.0mm
S-MA20007984

INGLEWOOD ST

S-MH20007319
RIM 234.77
INV N 227.95
INV E 227.95
INV S 227.95
INV W 227.98

83.60 OF 800X1200 BRICK CS
LINED WITH 36.0mm
S-MA20007983

FERRY ROAD

S-MH20007331
RIM 235.33
INV N 227.20
INV E 227.20
INV S 227.20
INV W 227.20

MATERIALS LIST						
CIPP LINING						
ITEM	MANUFACTURER	MODEL	DIMENSION RATIO	PRESSURE CLASS	MATERIAL	TYPE
TUBE	APPLIED FELTS	NATIONAL LINER			POLYURETHANE COATED FELT	
RESIN	ALPHA OWENS CORNING	L758-Lti-14 102T			POLYESTER	

CONTRACTOR: CAPITAL SEWER SERVICES INC.

**CONSTRUCTION COMPLETION
DATE: 2015/06/17**

FOR INDEX SEE
12196

RECORD DRAWING
WATER AND WASTE DEPARTMENT

METRIC
WHOLE NUMBERS INDICATE MILLIMETRES
DECIMALIZED NUMBERS INDICATE METRES

LOCATION APPROVED UNDERGROUND STRUCTURES	
SUPV. U/G STRUCTURES COMMITTEE	DATE
NOTE: LOCATION OF UNDERGROUND STRUCTURES AS SHOWN ARE BASED ON THE BEST INFORMATION AVAILABLE BUT NO GUARANTEE IS GIVEN THAT ALL EXISTING UTILITIES ARE SHOWN OR THAT THE GIVEN LOCATIONS ARE EXACT. CONFIRMATION OF EXISTENCE AND EXACT LOCATION OF ALL SERVICES MUST BE OBTAINED FROM THE INDIVIDUAL UTILITIES BEFORE PROCEEDING WITH CONSTRUCTION.	

B.M. ELEV.			
1	REVISED FOR RECORD DRAWING	2019/06/05	BL
NO.	REVISIONS	DATE	BY

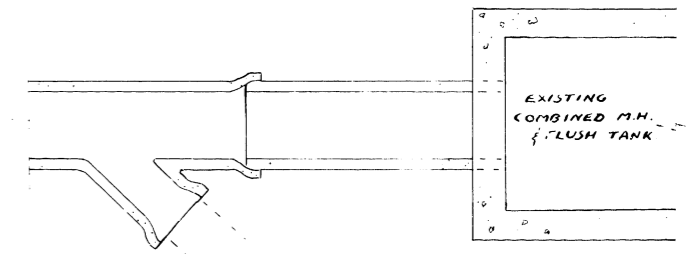
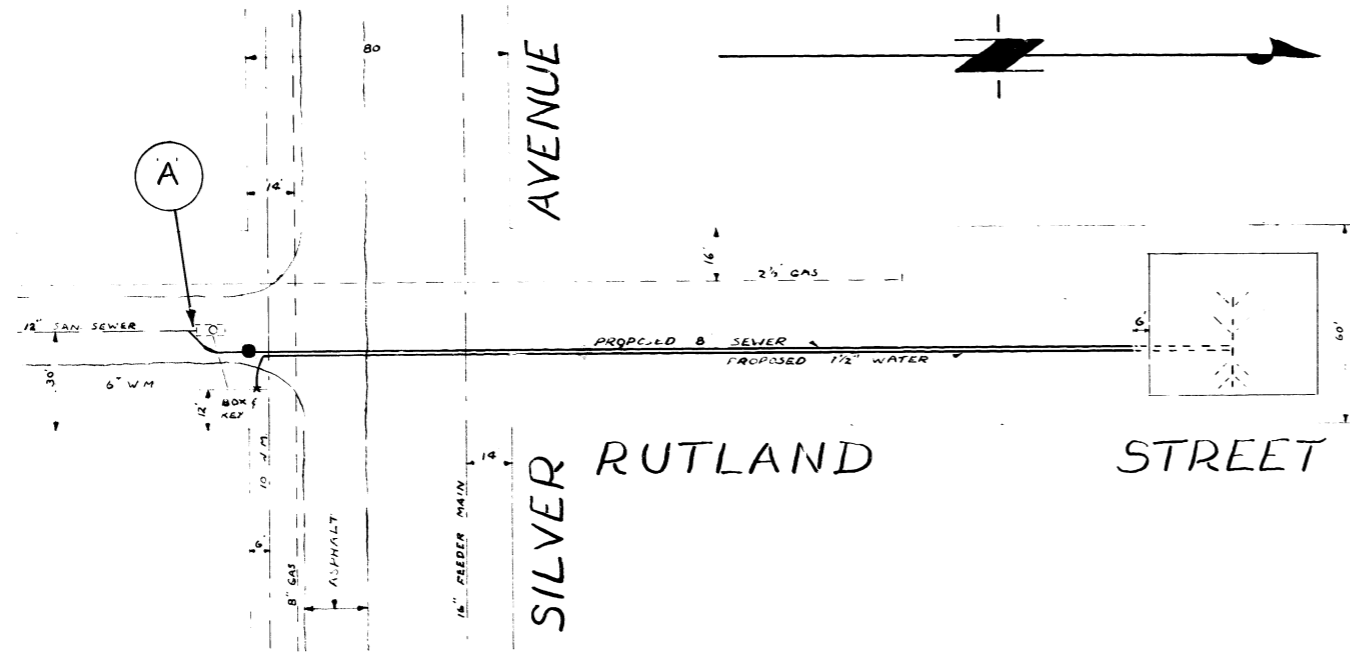
DESIGNED BY	SC	CHECKED BY	SC
DRAWN BY	JB	APPROVED BY	KZ
SCALE:		RELEASED FOR CONSTRUCTION	
HORIZONTAL	1:750		
VERTICAL			
DATE	2020 02 10	DATE	

ENGINEER'S SEAL
ORIGINAL SIGNED BY S.R.J. COURNOYER 2020-02-04
CONSULTANT DRAWING NUMBER -

THE CITY OF WINNIPEG
WATER AND WASTE DEPARTMENT
ENGINEERING DIVISION

2012 SEWER RENEWALS
BY CIPP LINING
NESS AVENUE
MH AT RUTLAND STREET TO
MH AT FERRY ROAD

SHEET **30** OF **58**
CITY DRAWING NUMBER
10301



DETAIL A
SCALE 1/2" = 1 FT.

NOTES:
 TUNNELING REQUIRED UNDER ASPHALT OF SILVER AVENUE.
 1ST EXIST. PIPE LENGTH TO BE EASED INTO EXIST. M.H. (OR REPLACED) TO ALLOW FOR PLACING OF 'Y' SECTION.
 2ND EXIST. PIPE TO BE EASED FROM SOUTH PRIMARY TO 1ST EXIST. M.H. UP TO 10' SOUTH OF SOUTH LINE OF ASPHALT.

LEGEND:
 ● PROPOSED MANHOLE

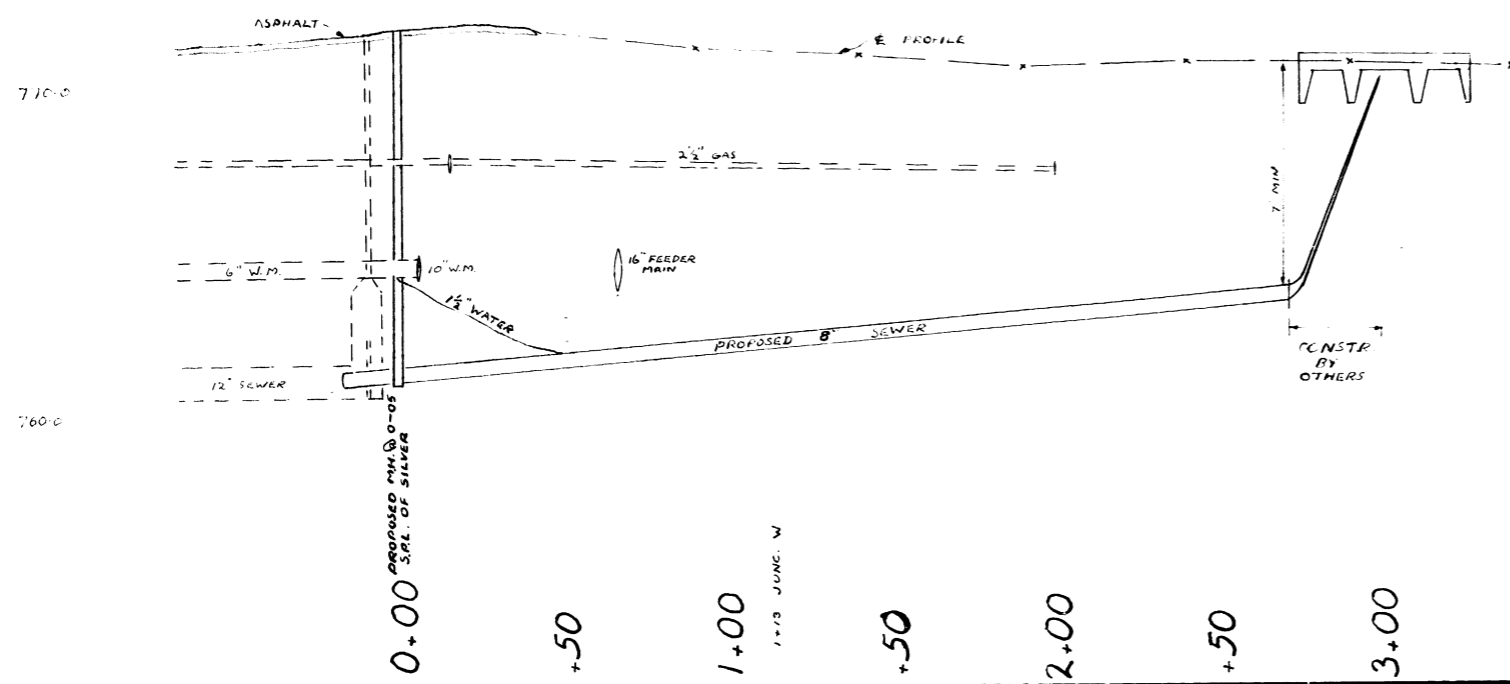
BENCH MARK: 1ST HYD 5. OF SILVER ON FERRY 775-38.

REVISIONS:
 1. CORRECTED MANHOLE BUILDING
 2. CORRECTED MANHOLE WEST OF SEWER TYPED
 DATE BY

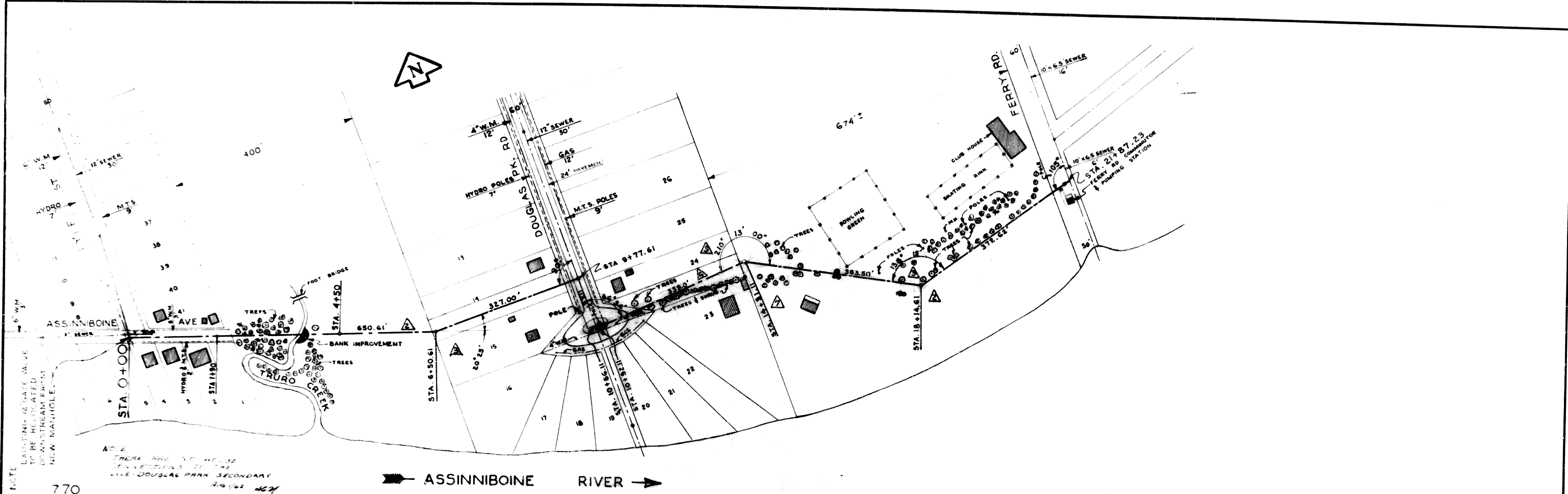
THE CITY OF ST. JAMES
 ENGINEERING DEPARTMENT
 TITLE: RUTLAND STREET
 SILVER AVE - 300' NORTH
 SEWER & WATER.

DRAWN BY: J. E. S. DATE: 20th May '63
 DESIGNED BY:
 APPROVED: CITY ENGINEER

SCALE: HOR. 1" = 40'
 VERT. 1" = 4'
 FILE: 502.A.

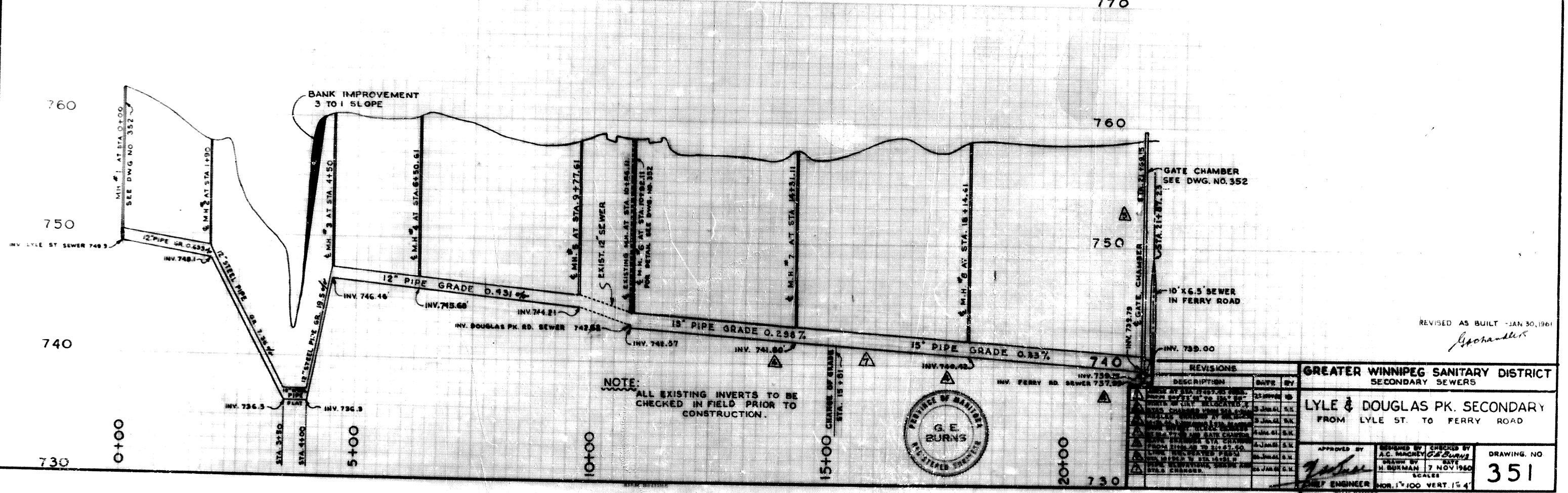


0+00 PROPOSED M.H. @ 0-00
 S.E. OF SILVER
 1+13 JUNE '63



NOTE
 THERE ARE NO HOUSE
 CONNECTIONS TO THE
 LYLE DOUGLAS PARK SECONDARY
 2/10/62 AGM

NOTE
 EXISTING 12" GATE VALVE
 TO BE RELOCATED
 DOWNSTREAM FROM
 NEW MANHOLE.



REVISED AS BUILT - JAN 30, 1961
 G. E. BURNS

NOTE:
ELEVATIONS ON THIS PAGE ARE ST. JAMES DATUM
TO RELATE TO FEDERAL DATUM ADD 0.33'

ADJOINING SHEET No 18

ADJOINING SHEET No 2

